



Remote Access Server

Patton 2960 Dual T1/E1/PRI RAS

The Patton 2960 Remote Access Server provides 16 to 60 dial-up ports each supporting V.92, V.90, V.44, K56Flex™, V.34+, and ISDN connections.

16, 24, 30, 48, or 60 ports in a 1U-High Platform

Model 2960 uses the latest technology to achieve the highest densities

Dynamic Analog/Digital Modems

All modems (V.92, V.44, V.90, K56Flex™, V.34+ and ISDN) are dynamically supported on dedicated DSPs

Frame Relay & PPP Network Uplinks

Dual Network uplinks to a FR switch or IP router for high speed trunking

SNMP/HTTP Network Management

Use a standard Web Browser, HP OpenView™ or simple PCs to configure and manage the 2960

MultiLink and Multichassis Support

Combine multiple dial-in sessions, even across boxes to deliver the highest performance

Dial-out/Callback/Dial-on-demand

Use the Model 2960 as a dial-out modem pool and support advanced dial-out applications

Dual-Redundant Power Supplies

Provide non-stop access with our high MTBF 2960. Convection-cooled and stackable without fans

The Patton 2960 RAS is an ideal solution for the established Internet Service Provider that is expanding into a new calling area. By integrating capabilities into our 2960 Remote Access Server, the ISP lowers expansion costs and produces revenue immediately.

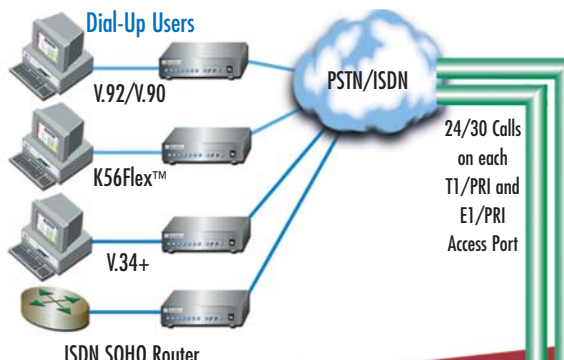
The 2960 RAS integrates up to 60 analog and digital modems, radius Accounting and Authentication Client, a 10/100 Ethernet port, IP Routing, Frame Relay forwarding, and four built-in E1/T1 CSU/DSUs. It connects 16 to 60 dial-in-

modems with V.92, V.44, V.90, K56Flex, V.34+ or ISDN users to the Internet, IP LANs, or Corporate Intranets. Load-sharing dual-redundant power supplies and integrated Web-based SNMP/HTTP management system capabilities make our 2960 RAS the most reliable and easiest to use RAS in the business!

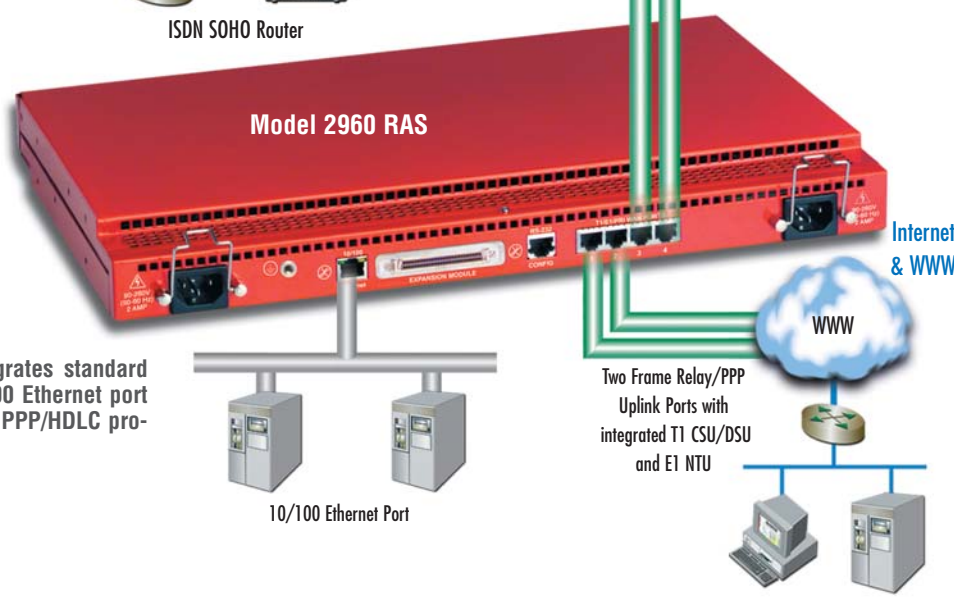


Special Rates Available Call for Details

Need additional details? Visit us at www.patton.com.



The 2960 RAS supports over 20 signaling methods and PSTN/ISDN switch types and 16/24/30/48/60 analog or digital modems



The Model 2960 integrates standard CSU/DSUs and a 10/100 Ethernet port with Frame Relay and PPP/HDLC protocol support

Two Frame Relay/PPP Uplink Ports with integrated T1 CSU/DSU and E1 NTU



Why use our Model 2960 RAS?

From HTTP management to dual-redundant power supplies to FR/PPP uplink integration, the NetLink Model 2960 provides an all-in-one package for the expanding ISP. Featuring:

- ✓ Integrated T1/E1 uplink ports with Frame Relay and PPP.
- ✓ Convection-cooled system. There are no fans or moving parts to fail.
- ✓ The lowest cost-of-ownership for an ISP or Telco building a Remote POP for 48/60 ports.

The Model 2960 requires 1/2 the space of existing RAS solutions. With greater reliability and a smaller package than any of its competitors, the Model 2960 is the cost leader in the industry.

2960 Competitive Positioning

	Patton 2960	Lucent MAX 4000	Lucent PM3
Number of V.90/V.92 calls	16/24/30/48/60	48/60 (NO V.92)	48/60 (NO V.92)
T1/E1/PRI ports	2	2	2
Backhaul/Uplink ports	2	2	Add'l \$\$\$
Self Cooling	YES	NO	NO
100Base-T Ethernet ports	YES	NO	NO
Built-in HTTP/WEB Mgmt	YES	NO	NO
Dual Redundant Power	YES	Add'l \$\$\$	Add'l \$\$\$
Tech Support	FREE	Add'l \$\$\$	Add'l \$\$\$
Software Upgrades	FREE	Add'l \$\$\$	Add'l \$\$\$
Rack Height	1U	2U	2U

Base Features
Key Selling Points

NetLink RAS Product Family*



Model 2960



Model 2996



Model 3120

	Model 2960	Model 2996	Model 3120
Model Number	2960/16 2960/24 2960/30 2960/48 2960/60	2996/96 2996/120	3120/48 3120/60 3120/96 3120/120
Number of Connections	16 24 30 48 60	96/120 Calls—4 T1's or 4 E1's	48 60 96 120
Power Supplies	Dual Redundant (Fixed) AC	Dual Redundant (Fixed) AC	Dual-Redundant (Hot Swap) AC or DC
Ethernet Ports	One 10/100Base-T	One 10/100Base-T	Two 10/100Base-T
WAN Ports	Four	Four	Four
Modem Modulations	V.92, V.44, V.90, K56Flex™, V.34 Annex 12, V.34, V.32bis, V.32, V.23, V.22, V.22bis, V.21, Bell 212A, Bell 202, Bell 103, EIA-PN-2330, V.8, V.8bis, Sync/Async receiver/transmitter for V.14, V.42/V.42bis error correction & compression.		
PSTN Signaling	E1 Primary Rate interface (Q.931), E1 MFR2 (R2), T1 Primary Rate Interface, T1 Robbed bit with Loop/Ground Start or E&M Wink, E&M Immed, Taiwan R1 and Drop & Insert		
Management Services	HTTP, SNMP, TELNET Dial-in and Ethernet or RS-232 console port, SYSLOG client, Remote software upgrade via FTP, User configurable login prompts and banners		
Authentication	RADIUS, PAP/CHAP, Username/Password, and Static Users Database (111 Entries)		
Software Upgrades	Achieved through Flash upgrades via FTP (upgrades available from www.patton.com)		
Protocol Services	TCP/IP suite with extensive protocol statistics • ICMP/FTP/FTP/RLOGIN/TELNET • Ethernet ARP, Proxy ARP and RARP protocols • Point-to-Point Protocol (PPP) • SLIP protocol • Van Jacobson TCP header compression PPP address and protocol compression • RADIUS authentication and accounting, with support for primary and secondary servers • RIP and RIPv2 • User configurable static routes • MultiLink PPP • Multi-chassis MultiLink • Layer 3 and Layer 4 IP Filtering • NFAS • DNS		
Dial-out Services	Dial-out with support for multi-link PPP • Single-line call-back • Remote authentication using PAP and CHAP and session time		

* Specifications subject to change without notice.

PE-Inalp Networks Private Ltd
An Associate of
PATTON
Electronics Co., USA

Old No. 14 and New No.6,
Brahadambal Road,
Nungambakkam High Road
Chennai: 600 034, India
Phone **+91 44 45490395/6/7**
Fax **+91 44 4549.0394**
Email **sales@patton.co.in**
Web **www.patton.co.in**

Patton-Inalp Networks AG

PATTON
inalp networks

Meriedweg 7
CH-3172 Niederwangen
Switzerland
Phone **+41 (31) 985 25 25**
Fax **+41 (31) 985 25 26**
E-mail **sales@inalp.com**
Web **www.inalp.com**

Patton Electronics Co.

PE PATTON
Electronics Co.

7622 Rickenbacker Drive
Gaithersburg, Maryland 20879
USA
Phone **+1 301 975 1000**
Fax **+1 301 869 9293**
E-mail **sales@patton.com**
Web **www.patton.com**

07MD2960-DS7

Patton is a registered trademark of Patton Electronics Company in the United States and other countries.