



# Remote Access Server Patton 3120 Quad T1/E1/PRI

Patton's new Model 3120, delivers enhanced dial-up remote access, brings expanded service offerings while ensuring maximum up-time, and fosters high availability by eliminating single points-of-failure.

### High-Density 96/120 Port RAS

Lowest-cost dial-up WAN access system available

### Dynamic Modem/Digital Support

All modems support V.110, V.92, V.44, V.90, K56Flex, V.34+ or digital ISDN connections

### Hot-Swap Dual-Redundant Power Supplies

Supports two AC, two DC, or a mix of AC and DC power supply modules

### Standard Dual 10/100 Ethernet Ports

Flexible integration options for your high performance network

### PMC Expansion Port

The PCI Mezzanine Card (PMC) provides network expansion, enabling the 3120 to offer additional revenue opportunities within the same chassis

### Web-Based

An embedded HTTP server provides complete configuration and control using standard web browsers

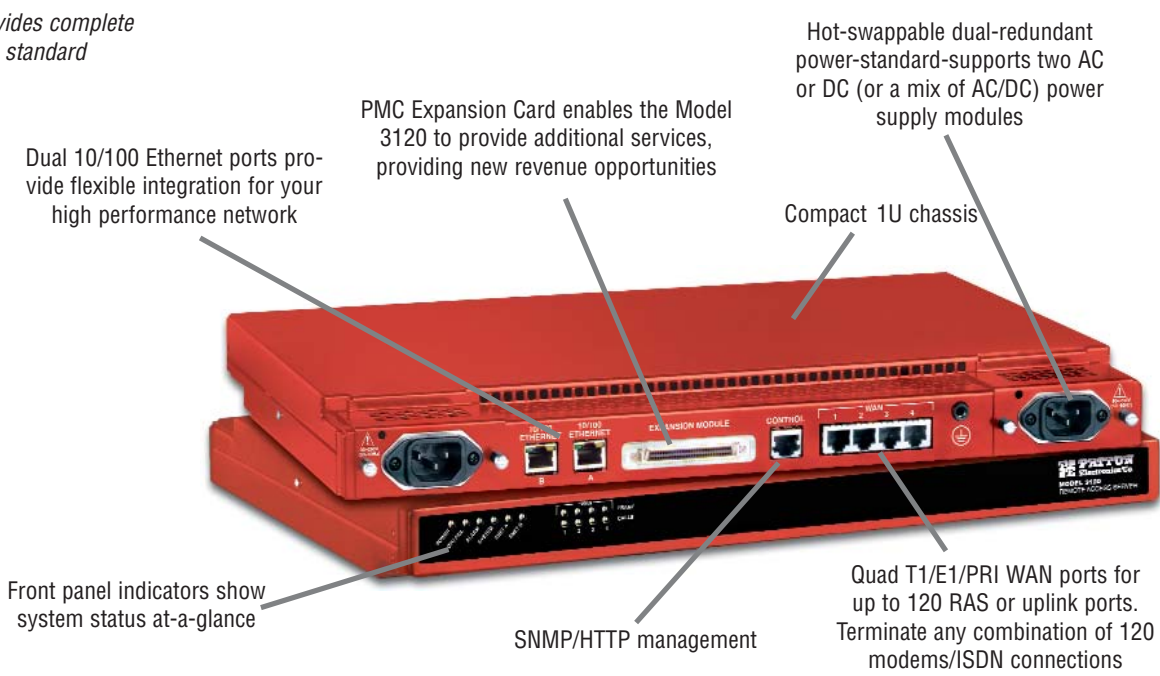
The Model 3120 Remote Access Server supports up to 120 digital ISDN or analog (V.110, V.92, V.90, K56Flex, V.34, etc.) modem connections in a single 1U high (1.75 in./4.45 cm) rack-mountable chassis. The Model 3120 is the highest density, lowest profile remote access server available anywhere. With its dual-redundant hot-swappable AC or DC power supplies, the 3120 RAS protects against single points-of-failure. It has two 10/100-Mbps Ethernet ports for load sharing and traffic balancing.

compression, VPN resources, additional 96/120 T1/E1/PRI WAN ports, or an xDSL module. ISPs can add asynchronous ports for terminating servers or dedicated DSL modem ports for increasing service offerings and revenue. The Model 3120 is a one-of-a-kind Network Access Unit. For more information, visit us at [www.patton.com](http://www.patton.com).

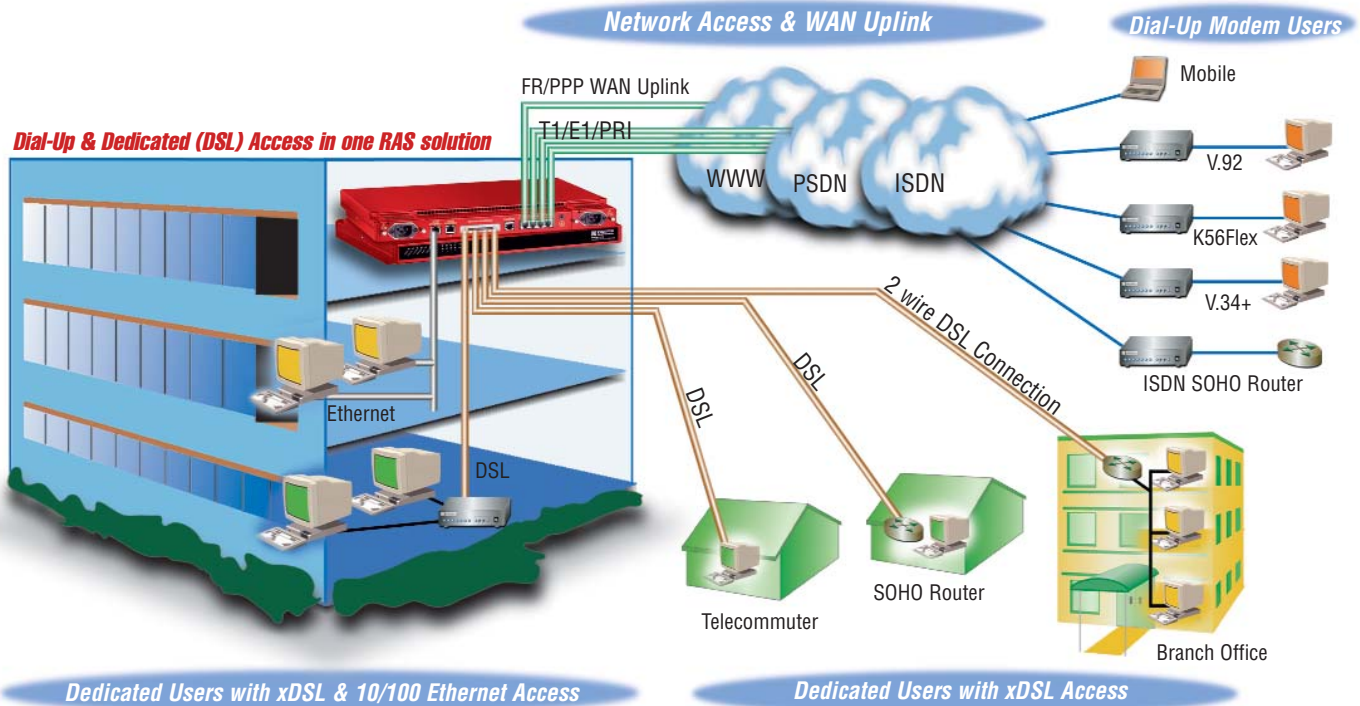


Special Rates Available  
Call for Details

For maximum flexibility, the 3120 includes an expansion slot that can be customized with optional PMC modules that support STAC



## Application Overview



## Specifications\*



	Model 2960					Model 2996		Model 3120			
Model Number	2960/16	2960/24	2960/30	2960/48	2960/60	2996/96	2996/120	3120/48	3120/60	3120/96	3120/120
Number of Connections	16	24	30	48	60	96/120 Calls - 4 T1's or 4 E1's		48	60	96	120
Power Supplies	Dual Redundant (Fixed) AC					Dual Redundant (Fixed) AC		Dual-Redundant (Hot Swap) AC or DC			
Ethernet Ports	One 10/100Base-T					One 10/100Base-T		Two 10/100Base-T			
WAN Ports	Four					Four		Four			
Modem Modulations	V.110, V.92, V.44, V.59, V.90, K56Flex™, V.34 Annex 12, V.34, V.32bis, V.32, V.23, V.22, V.22bis, V.21, Bell 212A, Bell 202, Bell 103, EIA-PN-2330, V.8, V.8bis, Sync/Async receiver/transmitter for V.14, V.42/V.42bis error correction & compression.										
PSTN Signaling	E1 Primary Rate interface (Q.931), E1 MFR2 (R2), T1 Primary Rate Interface, T1 Robbed bit with Loop/Ground Start or E&M Wink, E&M Immed, Taiwan R1 and Drop & Insert										
Management Services	HTTP, SNMP, TELNET Dial-in and Ethernet or RS-232 console port, SYSLOG client, Remote software upgrade via FTP, User configurable login prompts and banners										
Authentication	RADIUS, PAP/CHAP, Username/Password, and Static Users Database (111 Entries)										
Software Upgrades	Achieved through Flash upgrades via FTP (upgrades available from <a href="http://www.patton.com">www.patton.com</a> )										
Protocol Services	TCP/IP suite with extensive protocol statistics • ICMP/TFTP/FTP/RLOGIN/TELNET • Ethernet ARP, Proxy ARP and RARP protocols • Point-to-Point Protocol (PPP) • SLIP protocol • Van Jacobson TCP header compression PPP address and protocol compression • RADIUS authentication and accounting, with support for primary and secondary servers • RIP and RIPv2 • User configurable static routes • MultiLink PPP • Multi-chassis MultiLink • Layer 3 and Layer 4 IP Filtering • NFAS • DNIS • DOVBS										
Dial-out Services	Dial-out with support for multi-link PPP • Single-line call-back • Remote authentication using PAP and CHAP and session time										

\* Specifications subject to change without notice.

PE-Inalp Networks Private Ltd

An Associate of

**PATTON**  
Electronics Co., USA

Old No. 14 and New No.6,  
Brahadambal Road,  
Nungambakkam High Road  
Chennai: 600 034, India  
Phone **+91 44 45490395/6/7**  
Fax **+91 44 4549.0394**  
Email **sales@patton.co.in**  
Web **www.patton.co.in**

Patton-Inalp Networks AG

**PATTON**  
inalp networks

Meriedweg 7  
CH-3172 Niederwangen  
Switzerland  
Phone **+41 (31) 985 25 25**  
Fax **+41 (31) 985 25 26**  
E-mail **sales@inalp.com**  
Web **www.inalp.com**

Patton Electronics Co.

**PATTON**  
Electronics Co.

7622 Rickenbacker Drive  
Gaithersburg, Maryland 20879  
USA  
Phone **+1 301 975 1000**  
Fax **+1 301 869 9293**  
E-mail **sales@patton.com**  
Web **www.patton.com**

07MD3120-DS5

Patton is a registered trademark of Patton Electronics Company in the United States and other countries.