



The 3038 is a Managed Multi-Port RS-232 Asynchronous Multiplexer that combines up to eight EIA-232/V.24 interfaces over any composite V.35, X.21, E1/T1 or Ethernet/IP port, offering the lowest-cost, most flexible solution for multiple asynchronous terminal connectivity.

## Overview

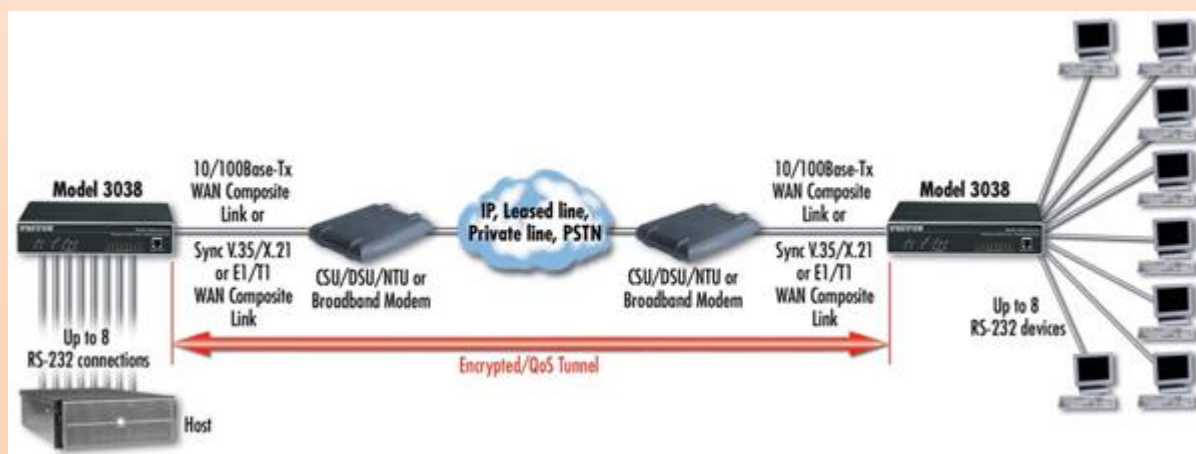
Now it is easier than ever to link up multiple asynchronous terminals, hosts, and devices. Patton's Model 3038 Managed Multi-port Asynchronous Multiplexer consolidates up to eight asynchronous data sources onto a single synchronous WAN link or IP/Ethernet LAN connection for secure, reliable, and transparent multiplexing.

The Model 3038 offers advanced network and transmission options. The integrated composite port provides a standard synchronous link connection to NTUs, DSUs or traditional WAN services. By including an Ethernet port as a composite uplink, the Model 3038 also "future proofs" your legacy equipment. Now multiplexed data can use existing LAN, WAN and Internet connections...simultaneously. Data security and service quality is ensured with IPSec encryption as well as packet labelling and integrated data QoS with flow-control.

Reliable data is ensured via multiple CRC-16 checks, transparent data checksums and in-order data delivery. In the event of an error, the Model 3038 automatically retransmits the data to insure transparent and error free delivery. With user configurable flow control including software XON/XOFF, hardware RTS/CTS and combination provides optimal data transfer.

Integrated management offers both local and remote configuration, control and troubleshooting. Use the supervisory port for out-of-band access or use LAN based services such as Telnet, WEB/HTTP and SNMP. Per-port options allow for diagnostics loops, traffic statistics, review channel status and monitor ports and events. Link down, data loss and errors can be signal.

## Typical Application



## Features & Benefits

- Eight Ports on a Single Link--Multiplex up to eight EIA-232/V.24 ports at 115.2kbps with individually configurable speed, flow control, echo and testing.
- E1/T1/X.21/V.35 Composite--Connect to any synchronous dedicated WAN or standard PPP. Ethernet/IP can be used over any IP Network without the expense of dedicated lines.
- Ethernet/IP Networking--User configurable IP services ensure reliable connectivity to any LAN or WAN. NAT, DHCP and Firewall permit advanced networking and flexibility.
- Data Integrity & Encryption--Ensure data with CRC-16 and reliable transport. Data is secure end-to-end using IPSEC with DES/3DES or AES options and auto MDI-X.
- Local & Remote Management--Configure and control with Web-based management, SNMP or command line supervisory port all with password protection.

## Specifications

**Terminal/Channel Ports:** Serial Asynchronous start-stop • # of Ports: 8 ports (3038); 4 ports (3034) • Max Aggregate Speed: 2Mbps • Interface: CCITT V.24 (EIA-561) on 8-pin RJ-45F • Data Communication Speed: Selectable 50bps-115.2kbps; auto-speed detection up to 115.2kbps • Data Format: Selectable 5,6,7, or 8 bits; 1, 1.5 or 2 stop bits, odd, even, or no parity • Flow Control: Software selectable (XON/XOFF) or hardware (RTS/CTS) in both directions • Break Propagation: Transparent • EIA signal propagation: Status of local DTR signal can be propagated to the remote end • Echo: Character echo can be selectively enabled for each terminal port

**Composite Port(s):** Auto-sensing 10/100BaseTX MDI-X Ethernet/V.35/X.21/ T1/E1 • Error detection and correction: 16-bit CRC-CCITT with ARQ (automatic re-transmission on error) • Speed: Selectable, serial up to 1.2Mbps-2Mbps, Ethernet auto detect-10/100 • Interface: DB25, V.35; DB15, X.21 • Data Encoding: NRZ or NRZI • Clock: Receive clock: external; Transmit clock: selectable as internal or external

**Supervisory Port(s):** Interface Auto-sensing 10/100BaseTX MDI-X on RJ-45 or Serial RS-232 (EIA-561) on RJ-45 • Serial Communication protocol: Asynchronous start-stop • Serial Speed: 300,1200,4800, or 9600 bps • Serial Data format: 7/8 bits, 2 stop bits, odd/even/no parity • Echo: Optional

**Commands:** Set/modify/view parameters • View status • Store parameters in non-volatile memory • Copy parameters between ports • Provide local/remote loop backs on port • Establish connection between supervisory and terminal ports • Obtain statistic reports • Unit reset; individual port reset • Remote supervisory access • Enable/Disable remote access

**IP Services Supported:** IPv4 • RIPv1 and v2 (RFC 1058 and 2453) • ICMP redirect (RFC 792); packet fragmentation • DiffServ/ToS set or queue per header bits • Packet policing discards excess traffic • 802.1p/Q VLAN support with 4096 IDs • IPSEC AH & ESP Modes • Manual/IKE keying • AES/DES/3DES Encryption

**IP Connectivity Supported:** X.21/V.35; LMI, Q993D, ANSI 617D, Gang of Four; PPP,PAP,CHAP,LCP,IPCP; T1/E1 (ITU-T G.703,ANSI T1.403; AMI, B8ZS, HDB3) • TCPRAW • UDP • Telnet • DHCP • NAT

### Operating Environment

Temp.: 0-40°C

Humidity: 5-80% (non condensing)

**System:** CPU Motorola MPC859 @ 50 MHz • Memory 16MB SDRAM/4MB Flash • Power: 100-240 VAC (50/60 Hz) • Power dissipation: 4W • Dimensions: 7.3" x 6.6" x 1.62" (185mm x 168mm x 41mm) • Weight: 1.2 lbs

**Compliance:** EMC compliance: EN55022 and EN55024 Safety compliance: EN 50950 CE compliance FCC Part 15 Class A